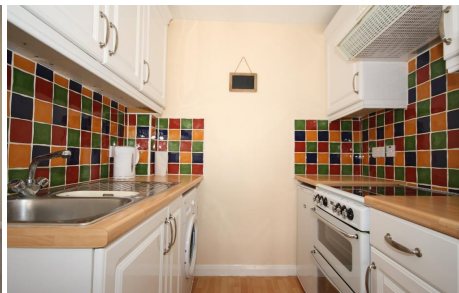


MANNERS

RESIDENTIAL

1 Bedroom Flat for Rent - £850 per month
Hazeldene Court, South Road, Horsell, Woking, GU21 4JX



KEY FEATURES

- GROUND FLOOR MAISONETTE • SPACIOUS LIVING ROOM • KITCHEN WITH APPLIANCES • BEDROOM WITH WARDROBES • WHITE BATHROOM SUITE • ENCLOSED LOW MAINTENANCE REAR GARDEN • RESIDENTS PARKING • UNFURNISHED • FIVE WEEK TENANCY DEPOSIT REQUIRED • EPC RATING:- C76

Description

Presented in a clean & tidy order throughout this ground floor maisonette is located within short walk of Horsell village and benefits from it's own rear garden.

The light and airy accommodation comprises of entrance lobby, spacious living room, fitted kitchen with appliances, double bedroom with fitted wardrobes and french doors to the garden, three piece white bathroom suite, gas central heating, double glazing, enclosed low maintenance rear garden which has been fully decked in timber, residents parking.

Additional Information: These particulars are meant as a guide only, and as such do not form part of a legally binding contract. Rent excludes the tenancy deposit of five weeks' rent up to an annual rent of £50,000 (£4166.67 pcm) and six weeks' rent above an annual rent of £50,000. A holding deposit of one weeks' rent is required upon making an Application For Tenancy which can be put towards the first month's rent, which will become payable upon signing the tenancy agreement. Should your Landlord accept a request to keep pets at the property, an additional monthly rent payment may be required. Upon request, further written information will be provided by the Agent.

These particulars are thought to be materially correct though their accuracy is not guaranteed and they do not form part of any contract. All measurements are approximate and we have not tested any appliances, electrical or plumbing installation or central heating systems.

