

MANNERS

RESIDENTIAL

1 Bedroom Flat for Rent - £900 per month

Wootton Grange, Mount Hermon Road, Woking, GU22 7UD



KEY FEATURES

- GROUND FLOOR APARTMENT • LIVING ROOM WITH BAY WINDOW • KITCHEN WITH DISHWASHER AND WASHER DRYER • DOUBLE BEDROOM WITH BUILT IN WARDROBE • WHITE BATHROOM SUITE • ELECTRIC HEATING & DOUBLE GLAZING • SECURE UNDERGROUND CAR PARKING • UNFURNISHED • FIVE WEEK TENANCY DEPOSIT REQUIRED • EPC RATING:- E49

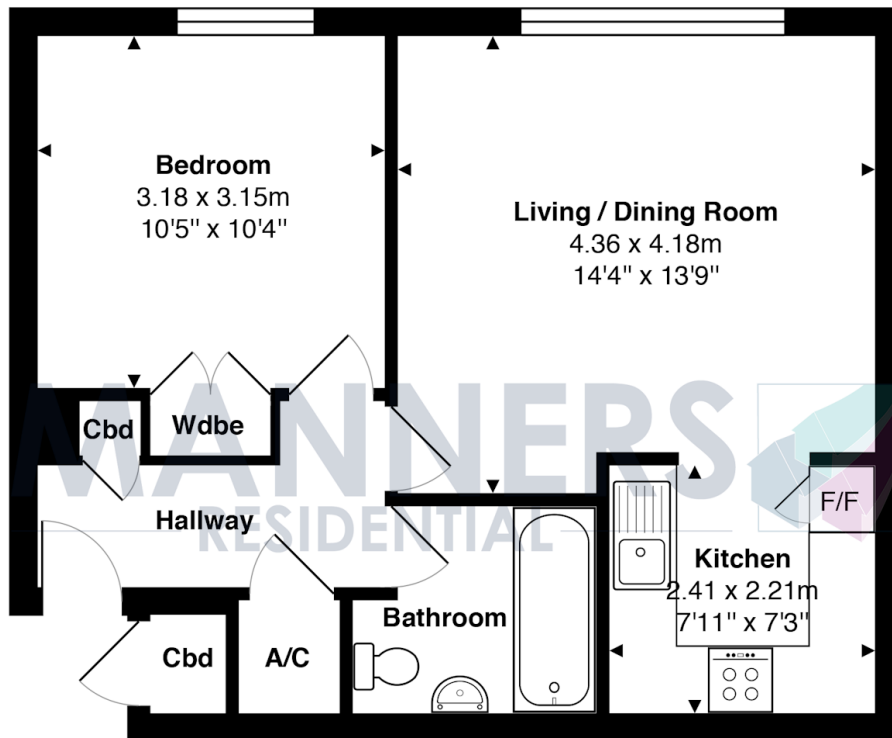
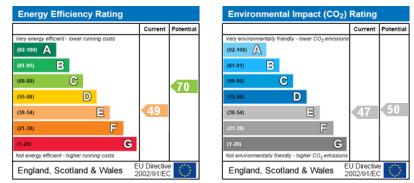
Description

A quite superbly presented one bedroom apartment, located in the highly sought after Mt Hermon area, within a short walk of Woking town centre and mainline station.

The stylish accommodation comprises, communal entrance hall with security entry phone system, private entrance hall, living room with bay window, stainless steel fronted kitchen units with a washer dryer and dishwasher, under floor heating, double bedroom with built in wardrobe, white bathroom suite with shower and ceramic tiled floor with under floor heating, laminate flooring, neutral décor, upvc double glazing, secure underground car parking.

Additional Information: These particulars are meant as a guide only, and as such do not form part of a legally binding contract. Rent excludes the tenancy deposit of five weeks' rent up to an annual rent of £50,000 (£4166.67 pcm) and six weeks' rent above an annual rent of £50,000. A holding deposit of one weeks' rent is required upon making an Application For Tenancy which can be put towards the first month's rent, which will become payable upon signing the tenancy agreement. Should your Landlord accept a request to keep pets at the property, an additional monthly rent payment may be required. Upon request, further written information will be provided by the Agent.

These particulars are thought to be materially correct though their accuracy is not guaranteed and they do not form part of any contract. All measurements are approximate and we have not tested any appliances, electrical or plumbing installation or central heating systems.



Ground Floor

Approx. Gross Internal Area 45.2 m² ... 487 ft²

All measurements are approximate and for display purposes only. Not to scale.