

MANNERS

RESIDENTIAL

3 Bedroom Flat for Rent - £1,225 per month

Hillview Court, Hillview Road, Woking, Surrey, GU22 7QW



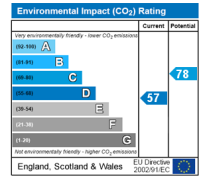
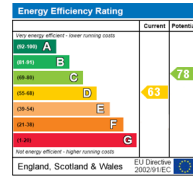
KEY FEATURES

- TOP FLOOR APARTMENT • VERSATILE LIGHT & AIRY ACCOMMODATION • SPACIOUS LIVING ROOM • KITCHEN WITH APPLIANCES • THREE BEDROOMS / BED 3 COULD BE A STUDY • WHITE BATHROOM SUITE WITH SEPARATE W.C. • GARAGE IN NEARBY BLOCK • UNFURNISHED • FIVE WEEK TENANCY DEPOSIT REQUIRED • EPC RATING:- D63

Description

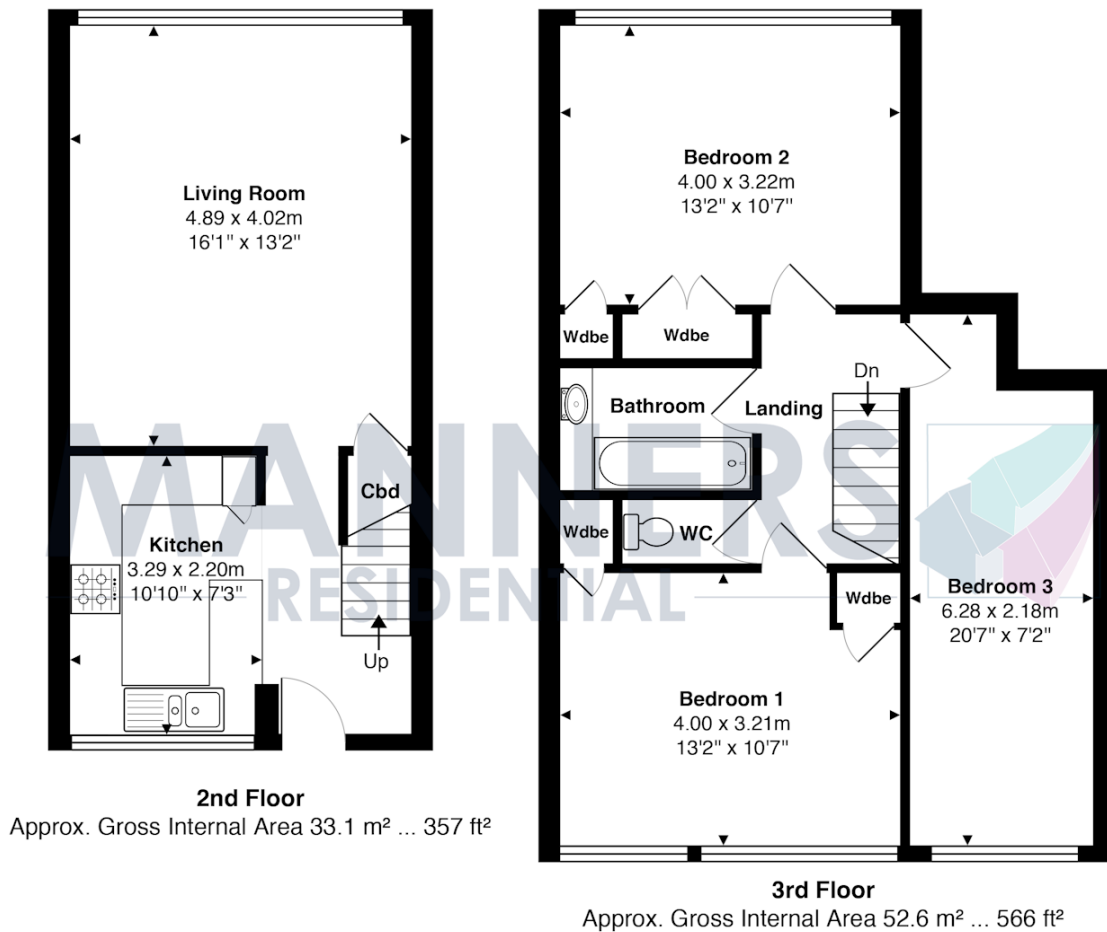
This versatile three bedroom split level apartment provides exceptionally spacious accommodation, and is located in a highly convenient position within a short walk of Woking town centre and mainline station.

The bright and spacious accommodation, spread over two floors, comprises: communal entrance hall with security entry system, private entrance hall, large living room, semi open plan kitchen with appliances including gas hob, oven, extractor, washing machine, dishwasher, integrated fridge & separate freezer. Stairs from the hallway take you up to the upper floor where you'll find two double bedrooms, a further third bedroom (which could also be used as a study or walk-in wardrobe), a two piece white bathroom suite and a separate...



Additional Information: These particulars are meant as a guide only, and as such do not form part of a legally binding contract. Rent excludes the tenancy deposit of five weeks' rent up to an annual rent of £50,000 (£4166.67 pcm) and six weeks' rent above an annual rent of £50,000. A holding deposit of one weeks' rent is required upon making an Application For Tenancy which can be put towards the first month's rent, which will become payable upon signing the tenancy agreement. Should your Landlord accept a request to keep pets at the property, an additional monthly rent payment may be required. Upon request, further written information will be provided by the Agent.

These particulars are thought to be materially correct though their accuracy is not guaranteed and they do not form part of any contract. All measurements are approximate and we have not tested any appliances, electrical or plumbing installation or central heating systems.



Total Approx. Gross Internal Area 85.7 m² ... 923 ft²

All measurements are approximate and for display purposes only. Not to scale.