

MANNERS

RESIDENTIAL

1 Bedroom Flat for Sale - £190,000
Badgers Close, St Johns, Woking, Surrey, GU21 3JF



KEY FEATURES

- GROUND FLOOR MAISONETTE • LIVING ROOM • KITCHEN WITH WINDOW • DOUBLE BEDROOM • WHITE BATHROOM SUITE • ALLOCATED PARKING • WALKING DISTANCE TO TOWN CENTRE • WALKING DISTANCE TO ST JOHNS VILLAGE • LEASEHOLD - BALANCE OF 999 YEARS • EPC RATING:- E49

Description

Held on the balance of a 999 year lease this one bedroom ground floor maisonette is situated in a sought after cul de sac position within walking distance of both St Johns village and Woking town centre and has an allocated parking space.

The property has a proven track record in the Woking rental market, and being held on the balance of a long lease and with comparatively low leasehold outgoings, this purpose built maisonette is sure to appeal to investment buyers, commuters and first time buyers alike.

Further details regarding the lease, ground rent and service charge are available upon request.



Ground Floor

Outside - The property is approached by a pathway leading to the front door giving access to the living room.

Living Room - With windows to front, door to inner hallway and openings to the kitchen.

Kitchen - With window to side

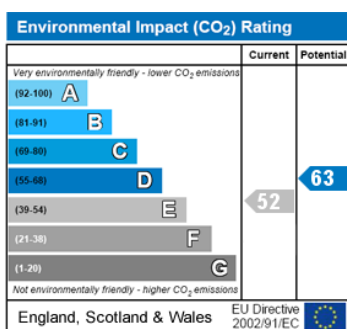
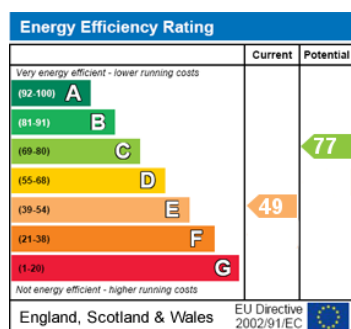
Inner Hallway - Accessed from the living room and giving access to the bedroom and bathroom. Understairs storage cupboard and further cupboard housing hot and cold water tanks.

Bedroom - With window to rear.

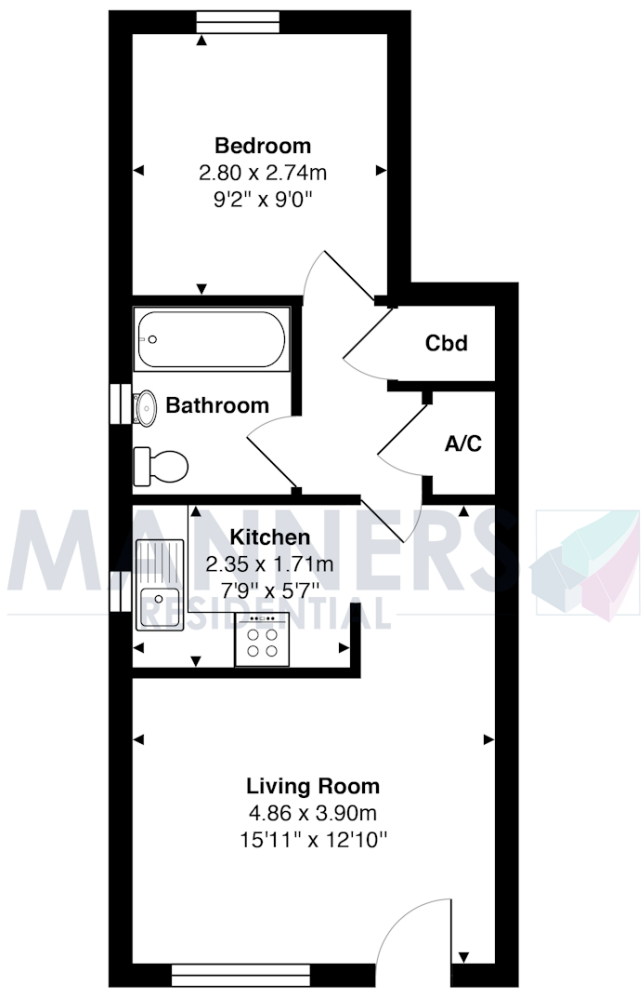
Bathroom - With window to side and fitted with a white suite comprising: panel enclosed bath with mixer tap, low level w.c. and pedestal mounted wash hand basin, vinyl floor covering.

Exterior

Outside - The property is set amongst well kept communal grounds. There is a residents parking area with ONE ALLOCATED PARKING SPACE.



Additional Information: These particulars are thought to be materially correct though their accuracy is not guaranteed and they do not form part of any contract. All measurements are approximate and we have not tested any appliances, electrical or plumbing installation or central heating systems.



Ground Floor

Total Approx. Gross Internal Area 35.4 m² ... 381 ft²

All measurements are approximate and for display purposes only. Not to scale.