

MANNERS

RESIDENTIAL

2 Bedroom Flat for Rent - £995 per month

Grosvenor Place, Burleigh Gardens, Woking, Surrey, GU21 5DJ



KEY FEATURES

- GATED DEVELOPMENT • TWO BEDROOMS • ENSUITE SHOWER ROOM • LARGE DOUBLE ASPECT LOUNGE/DINING ROOM • DOUBLE GLAZING • ELECTRIC HEATING • SECURE CAR PARKING • UNFURNISHED • FIVE WEEK TENANCY DEPOSIT REQUIRED • EPC - TBC

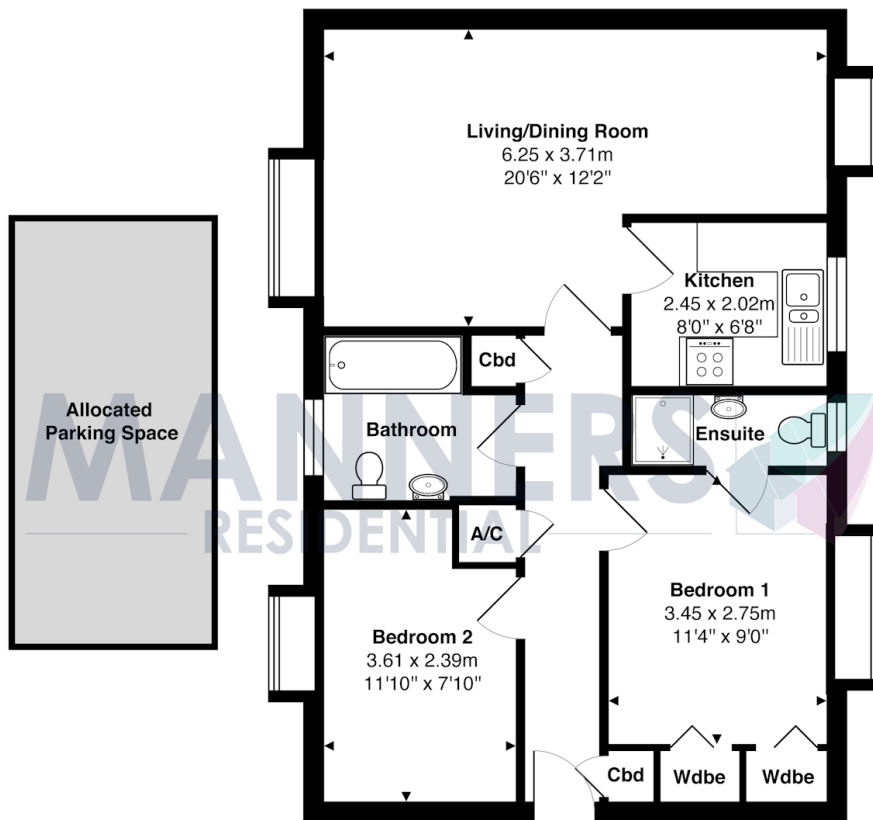
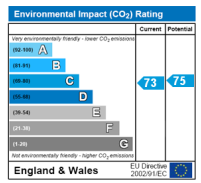
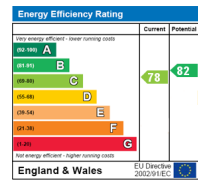
Description

This spacious two bedroom, two bathroom first floor flat forms part of this highly sought after gated development, located within a stone's throw of Woking town centre and mainline station.

The accommodation comprises, communal entrance hall with security entry phone system, private entrance hall, large double aspect lounge/dining room, modern kitchen with appliances, master bedroom with built in wardrobes and ensuite shower room, further double bedrooms, bathroom, neutral décor and carpets, double glazing, electric heating, secure car parking. EPC Rating:-TBC.

Additional Information: These particulars are meant as a guide only, and as such do not form part of a legally binding contract. Rent excludes the tenancy deposit of five weeks' rent up to an annual rent of £50,000 (£4166.67 pcm) and six weeks' rent above an annual rent of £50,000. A holding deposit of one weeks' rent is required upon making an Application For Tenancy which can be put towards the first month's rent, which will become payable upon signing the tenancy agreement. Should your Landlord accept a request to keep pets at the property, an additional monthly rent payment may be required. Upon request, further written information will be provided by the Agent.

These particulars are thought to be materially correct though their accuracy is not guaranteed and they do not form part of any contract. All measurements are approximate and we have not tested any appliances, electrical or plumbing installation or central heating systems.



1st Floor

Total Approx. Gross Internal Area 59.7 m² ... 643 ft²

All measurements are approximate and for display purposes only. Not to scale.