

MANNERS

RESIDENTIAL

2 Bedroom Flat for Rent - £975 per month

Brantwood Court, Brantwood Drive, West Byfleet, Surrey, KT14 6BU



KEY FEATURES

- TWO BEDROOMS • LARGE LIVING ROOM • MODERN KITCHEN & BATHROOM • GAS CENTRAL HEATING • DOUBLE GLAZING • NEUTRAL DECOR • WALKING DISTANCE TO MAINLINE STATION • UNFURNISHED • FIVE WEEK TENANCY DEPOSIT REQUIRED • EPC RATING:- D67

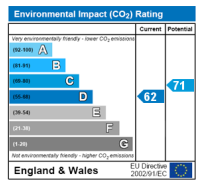
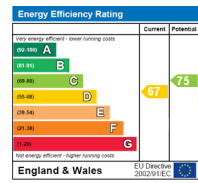
Description

This spacious and well presented two bedroom apartment features a modern kitchen and bathroom, is gas centrally heated and double glazed, enjoys a pleasant aspect over communal gardens and is located within walking distance of West Byfleet centre and mainline station.

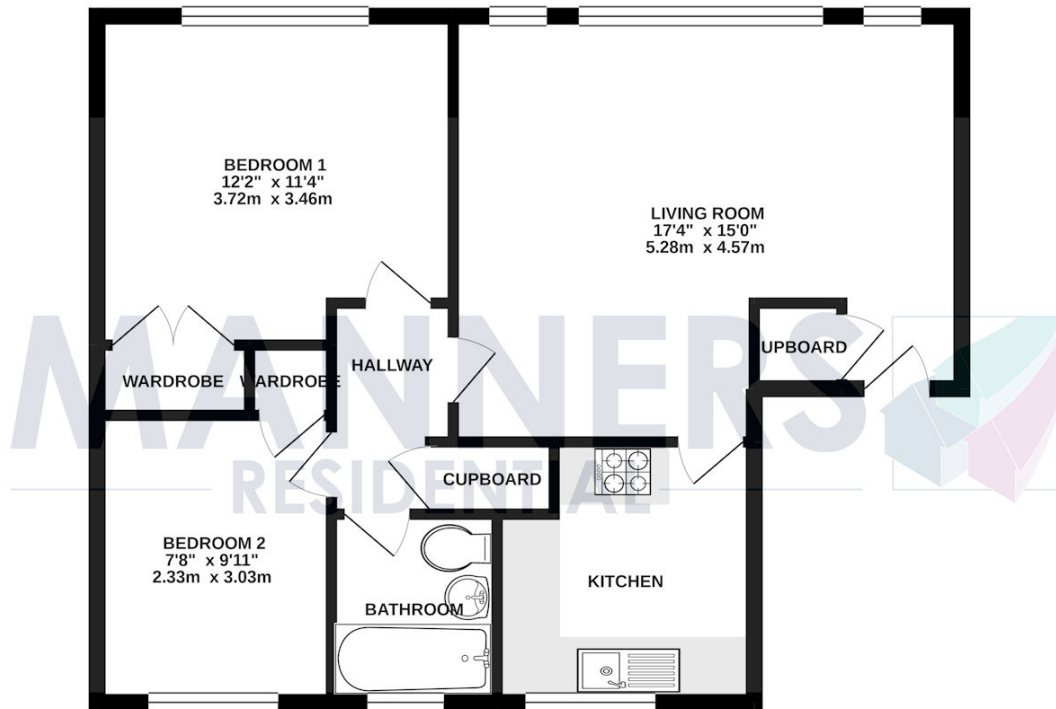
The accommodation is presented in neutral tones throughout and comprises: Communal entrance hall with security entry phone system, entrance area with cloaks cupboard, spacious living room, modern kitchen with beech fronted units and appliances, inner hallway, two good sized bedrooms with built in wardrobes, modern bathroom suite with shower, gas central heating, double glazing, secure storage facility on ground floor, walking distance to West Byfleet centre and mainline sta...

Additional Information: These particulars are meant as a guide only, and as such do not form part of a legally binding contract. Rent excludes the tenancy deposit of five weeks' rent up to an annual rent of £50,000 (£4166.67 pcm) and six weeks' rent above an annual rent of £50,000. A holding deposit of one weeks' rent is required upon making an Application For Tenancy which can be put towards the first month's rent, which will become payable upon signing the tenancy agreement. Should your Landlord accept a request to keep pets at the property, an additional monthly rent payment may be required. Upon request, further written information will be provided by the Agent.

These particulars are thought to be materially correct though their accuracy is not guaranteed and they do not form part of any contract. All measurements are approximate and we have not tested any appliances, electrical or plumbing installation or central heating systems.



GROUND FLOOR 625 sq.ft. (58.1 sq.m.) approx.



TOTAL FLOOR AREA: 625 sq.ft. (58.1 sq.m.) approx.

Whilst every attempt has been made to ensure the accuracy of the floorplan contained here, measurements of doors, windows, rooms and any other items are approximate and no responsibility is taken for any error, omission or mis-statement. This plan is for illustrative purposes only and should be used as such by any prospective purchaser. The services, systems and appliances shown have not been tested and no guarantee as to their operability or efficiency can be given.
Made with Metropix ©2021