

MANNERS

RESIDENTIAL

1 Bedroom Flat for Rent - £825 per month

Dorchester Court, Oriental Road, Woking, Surrey, GU22 7DN



KEY FEATURES

- STYLISH SPLIT LEVEL APARTMENT • LIVING ROOM WITH PART VAULTED CEILING • GALLARIED DOUBLE BEDROOM • WALKING DISTANCE TO TOWN CENTRE • REFITTED BATHROOM • ELECTRIC HEATING • RESIDENTS PARKING • UNFURNISHED • FIVE WEEK TENANCY DEPOSIT REQUIRED • EPC RATING:- E47

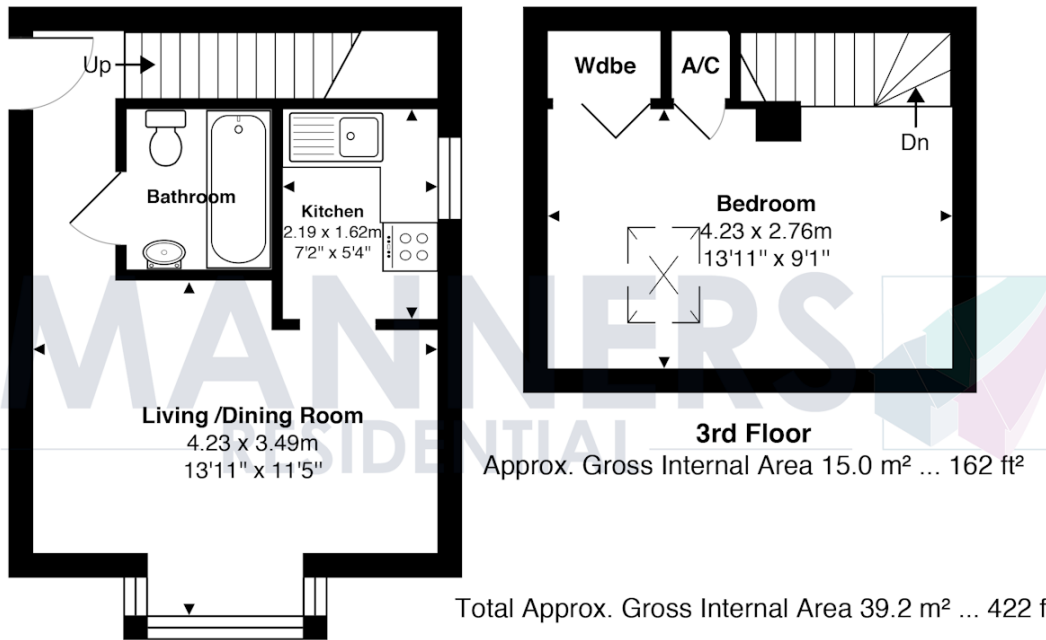
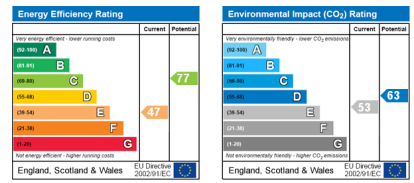
Description

This stylish split level apartment with parking, is located on the highly sought after "Grange" development which is within walking distance of Woking town centre and mainline station.

The accommodation, which is presented in neutral tones throughout, comprises: communal entrance hall with security entry phone system, private entrance hall, living room with part vaulted ceiling, fitted kitchen with appliances, galleried double bedroom with built in wardrobes, three piece bathroom suite, electric heating, carpets and vinyls to kitchen and bathroom, residents parking.

Additional Information: These particulars are meant as a guide only, and as such do not form part of a legally binding contract. Rent excludes the tenancy deposit of five weeks' rent up to an annual rent of £50,000 (£4166.67 pcm) and six weeks' rent above an annual rent of £50,000. A holding deposit of one weeks' rent is required upon making an Application For Tenancy which can be put towards the first month's rent, which will become payable upon signing the tenancy agreement. Should your Landlord accept a request to keep pets at the property, an additional monthly rent payment may be required. Upon request, further written information will be provided by the Agent.

These particulars are thought to be materially correct though their accuracy is not guaranteed and they do not form part of any contract. All measurements are approximate and we have not tested any appliances, electrical or plumbing installation or central heating systems.



2nd Floor
Approx. Gross Internal Area 24.2 m² ... 260 ft²

3rd Floor
Approx. Gross Internal Area 15.0 m² ... 162 ft²

Total Approx. Gross Internal Area 39.2 m² ... 422 ft²
All measurements are approximate and for display purposes only. Not to scale.