

MANNERS

RESIDENTIAL

2 Bedroom Flat for Rent - £1,150 per month

Abingdon Court, Heathside Road, Woking, Surrey, GU22 7EU



KEY FEATURES

- GROUND FLOOR APARTMENT • LIVING/DINING ROOM • MODERN FITTED KITCHEN WITH APPLIANCES • FIRST BEDROOM WITH WARDROBES & EN SUITE • FURTHER SECOND BEDROOM • WHITE BATHROOM SUITE • UNDER COVER ALLOCATED PARKING SPACE • UNFURNISHED • FIVE WEEK TENANCY DEPOSIT REQUIRED • EPC RATING:- C69

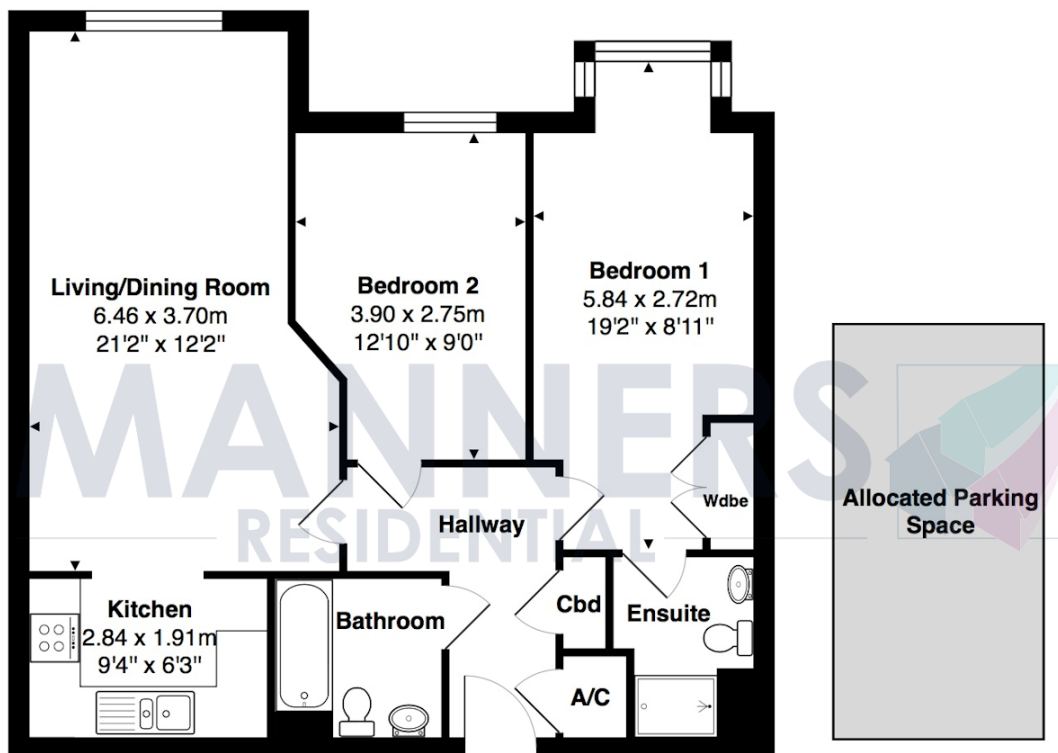
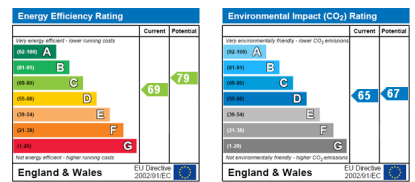
Description

Situated on the ground floor of this gated development, which is within walking distance of Woking town centre and mainline train station, this two bedroom apartment has light and airy accommodation and benefits from having an undercover parking space.

The accommodation comprises of communal front door with entry phone system, communal hallway, personal front door, entrance hallway with cupboards, spacious living/dining room, fitted kitchen with appliances including a slimline dishwasher, master bedroom suite with built in wardrobes and an ensuite, further second bedroom and family sized tiled bathroom, electric heating, double glazed windows and a under cover allocated parking space with storage cupboard.

Additional Information: These particulars are meant as a guide only, and as such do not form part of a legally binding contract. Rent excludes the tenancy deposit of five weeks' rent up to an annual rent of £50,000 (£4166.67 pcm) and six weeks' rent above an annual rent of £50,000. A holding deposit of one weeks' rent is required upon making an Application For Tenancy which can be put towards the first month's rent, which will become payable upon signing the tenancy agreement. Should your Landlord accept a request to keep pets at the property, an additional monthly rent payment may be required. Upon request, further written information will be provided by the Agent.

These particulars are thought to be materially correct though their accuracy is not guaranteed and they do not form part of any contract. All measurements are approximate and we have not tested any appliances, electrical or plumbing installation or central heating systems.



Ground Floor

Total Approx. Gross Internal Area 67.7 m² ... 729 ft² (excluding allocated parking space)

All measurements are approximate and for display purposes only. Not to scale.