

MANNERS

RESIDENTIAL

1 Bedroom Flat for Rent - £850 per month

Wansford Green, Goldsworth Park, Woking, Surrey, GU21 3QH



KEY FEATURES

- LARGE LIVING ROOM • MODERN REFITTED KITCHEN • DOUBLE BEDROOM WITH BUILT IN WARDROBE • MODERN REFITTED BATHROOM • DOUBLE GLAZED WINDOWS • NEUTRAL DECORATIVE ORDER • QUIET LOCATION • UNFURNISHED • FIVE WEEK TENANCY DEPOSIT REQUIRED • EPC RATING:- C69 / COUNCIL TAX BAND:- C

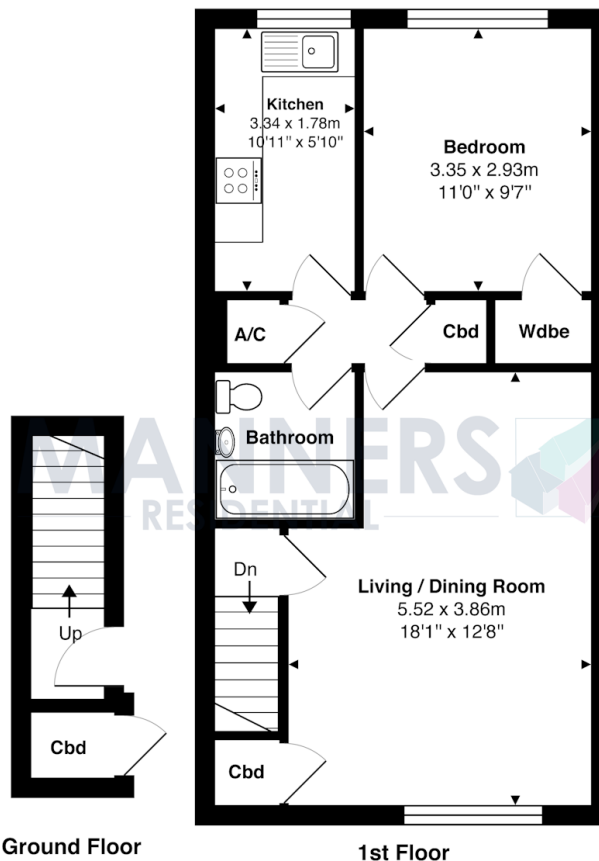
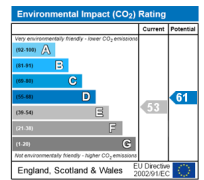
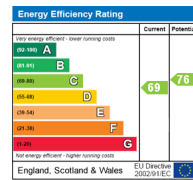
Description

Located within walking distance of local shops and just 5 minutes drive to Woking town centre and mainline station this spacious one bedroom first floor flat enjoys an enviable position overlooking a small green.

The accommodation comprises: communal entrance hall, large living room, inner hallway, modern refitted kitchen with appliances including fridge/freezer, washing machine, oven, hob & extractor, double bedroom with built in wardrobe, modern refitted bathroom, neutral decorative order and double glazed windows.

Additional Information: These particulars are meant as a guide only, and as such do not form part of a legally binding contract. Rent excludes the tenancy deposit of five weeks' rent up to an annual rent of £50,000 (£4166.67 pcm) and six weeks' rent above an annual rent of £50,000. A holding deposit of one weeks' rent is required upon making an Application For Tenancy which can be put towards the first month's rent, which will become payable upon signing the tenancy agreement. Should your Landlord accept a request to keep pets at the property, an additional monthly rent payment may be required. Upon request, further written information will be provided by the Agent.

These particulars are thought to be materially correct though their accuracy is not guaranteed and they do not form part of any contract. All measurements are approximate and we have not tested any appliances, electrical or plumbing installation or central heating systems.



Total Approx. Gross Internal Area 50.4 m² ... 542 ft²

All measurements are approximate and for display purposes only. Not to scale.