

MANNERS

RESIDENTIAL

1 Bedroom Flat for Rent - £850 per month
Ellingham, Midhope Road, Woking, Surrey, GU22 7UQ



KEY FEATURES

- GROUND FLOOR APARTMENT
- SPACIOUS LIVING ROOM
- KITCHEN WITH APPLIANCES
- MODERN BATHROOM
- DOUBLE GLAZING
- GAS CENTRAL HEATING
- RESIDENTS PARKING
- UNFURNISHED
- FIVE WEEK TENANCY DEPOSIT REQUIRED
- EPC RATING: - C68 / COUNCIL TAX BAND:- C

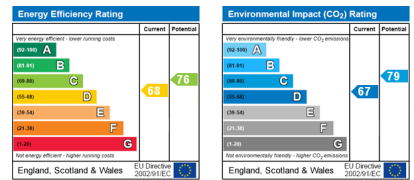
Description

This one bedroom ground floor flat is located within a popular part of Woking which is walking distance of Woking town centre with it's mainline train station and situated amongst pleasant communal gardens with private parking.

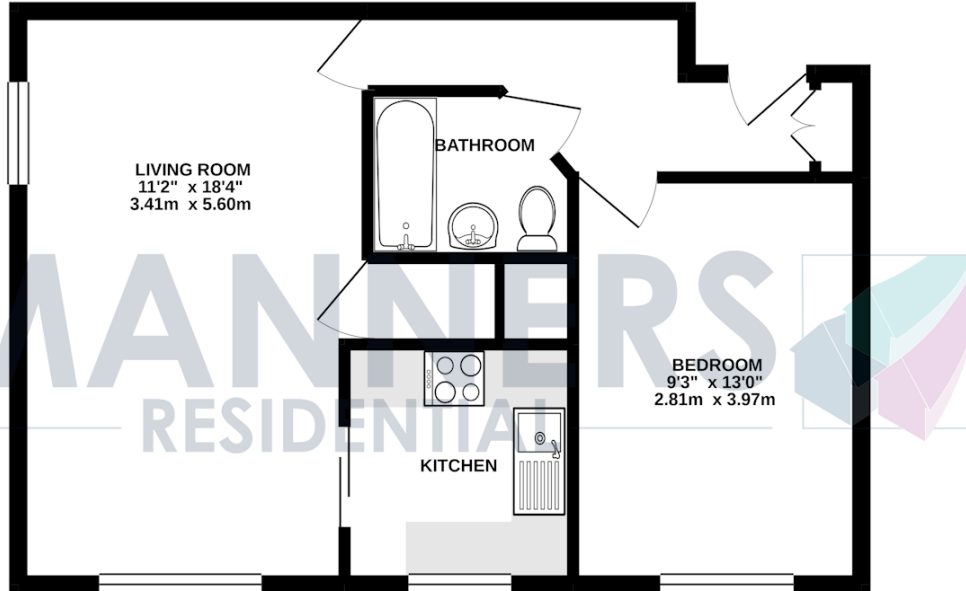
The accommodation comprises of communal entrance hall, private hallway with storage cupboard, spacious lounge, kitchen with appliances, large double bedroom, modern white bathroom suite, gas central heating, neutral décor and carpets, parking.

Additional Information: These particulars are meant as a guide only, and as such do not form part of a legally binding contract. Rent excludes the tenancy deposit of five weeks' rent up to an annual rent of £50,000 (£4166.67 pcm) and six weeks' rent above an annual rent of £50,000. A holding deposit of one weeks' rent is required upon making an Application For Tenancy which can be put towards the first month's rent, which will become payable upon signing the tenancy agreement. Should your Landlord accept a request to keep pets at the property, an additional monthly rent payment may be required. Upon request, further written information will be provided by the Agent.

These particulars are thought to be materially correct though their accuracy is not guaranteed and they do not form part of any contract. All measurements are approximate and we have not tested any appliances, electrical or plumbing installation or central heating systems.



GROUND FLOOR 498 sq.ft. (46.3 sq.m.) approx.



TOTAL FLOOR AREA: 498 sq.ft. (46.3 sq.m.) approx.

Whilst every attempt has been made to ensure the accuracy of the floorplan contained here, measurements of doors, windows, rooms and any other items are approximate and no responsibility is taken for any error, omission or mis-statement. This plan is for illustrative purposes only and should be used as such by any prospective purchaser. The services, systems and appliances shown have not been tested and no guarantee as to their operability or efficiency can be given.
Made with Metropix ©2021