

MANNERS

RESIDENTIAL

2 Bedroom Flat for Rent - £1,150 per month
Hillview Ct, Hillview Road, Woking, Surrey, GU22 7QW



KEY FEATURES

- GROUND FLOOR FLAT • LIVING ROOM • FITTED KITCHEN • BEDROOM ONE • BEDROOM TWO • BATHROOM WITH SEPARATE W.C • WALKING DISTANCE TO THE TOWN • UNFURNISHED • FIVE WEEK TENANCY DEPOSIT REQUIRED • EPC RATING:- D66 / COUNCIL TAX:- C

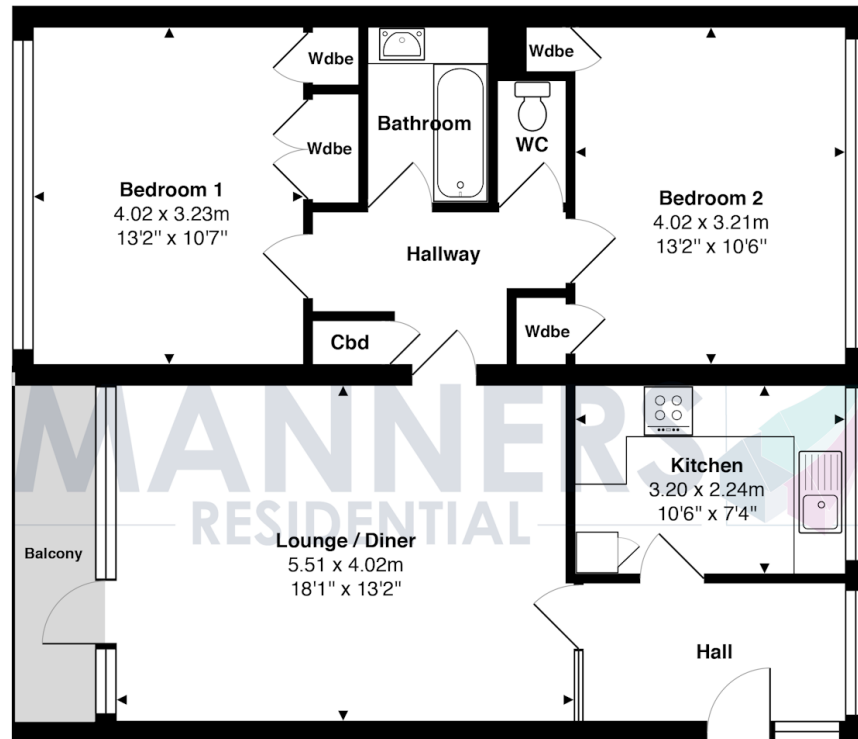
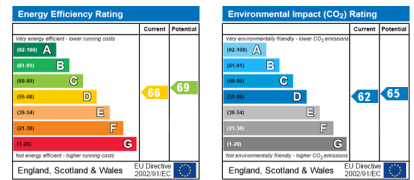
Description

A large and well presented two double bedroom ground floor flat, located in an ultra convenient central position within a stone's throw of Woking town centre and mainline station.

It is presented in good order throughout and the accommodation comprises, communal entrance hall, private entrance hall, spacious living room with balcony, kitchen with appliances, inner hallway, two double bedrooms, bathroom with separate w.c., good neutral décor and carpets.

Additional Information: These particulars are meant as a guide only, and as such do not form part of a legally binding contract. Rent excludes the tenancy deposit of five weeks' rent up to an annual rent of £50,000 (£4166.67 pcm) and six weeks' rent above an annual rent of £50,000. A holding deposit of one weeks rent is required upon making an Application For Tenancy which can be put towards the first month's rent, which will become payable upon signing the tenancy agreement. Should your Landlord accept a request to keep pets at the property, an additional monthly rent payment may be required. Upon request, further written information will be provided by the Agent.

These particulars are thought to be materially correct though their accuracy is not guaranteed and they do not form part of any contract. All measurements are approximate and we have not tested any appliances, electrical or plumbing installation or central heating systems.



Ground Floor

Total Approx. Gross Internal Area 76.0 m² ... 818 ft² (excluding balcony)

All measurements are approximate and for display purposes only. Not to scale.